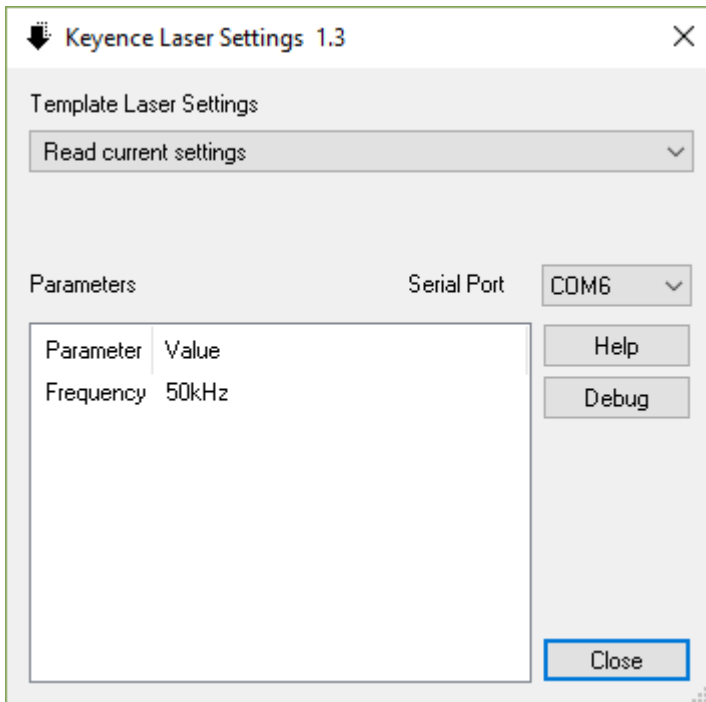


Technical Note for the KLIPPEL R&D and QC SYSTEM (Document Revision 1.1)

The Keyence LK-Navigator 2 software is dedicated to all Laser Sensors from the Keyence LK-G5000 Laser Series.

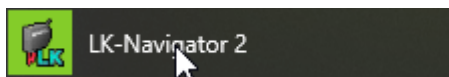
The LK-Navigator 2 is not included with LK-G5000 Lasers Sets bought from Klippel. It has to be ordered separately. Following note giving just a short introduction to the customer why own it.

From Klippel bought LK-G5000 Lasers Sets came with a small Klippel Keyence Tool to load Klippel provide setups to the Laser Controller. This tool requires a serial connection. A special serial adapter cable and USB to serial converter are included.



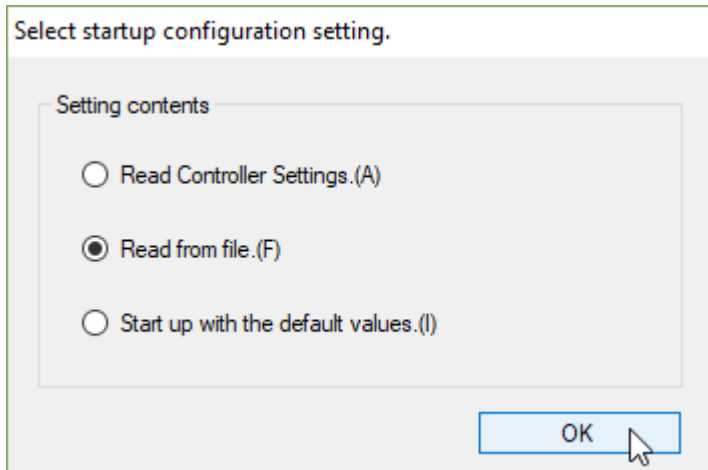
## 1 How to load a Klippel provided Setup file into the software

### 1.1 Start LK-Navigator 2

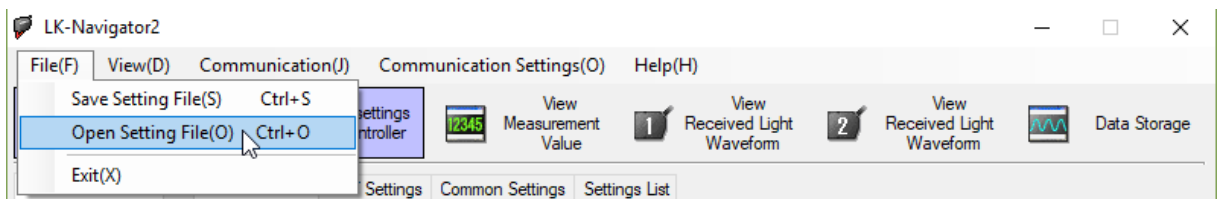


### 1.2 Load from file

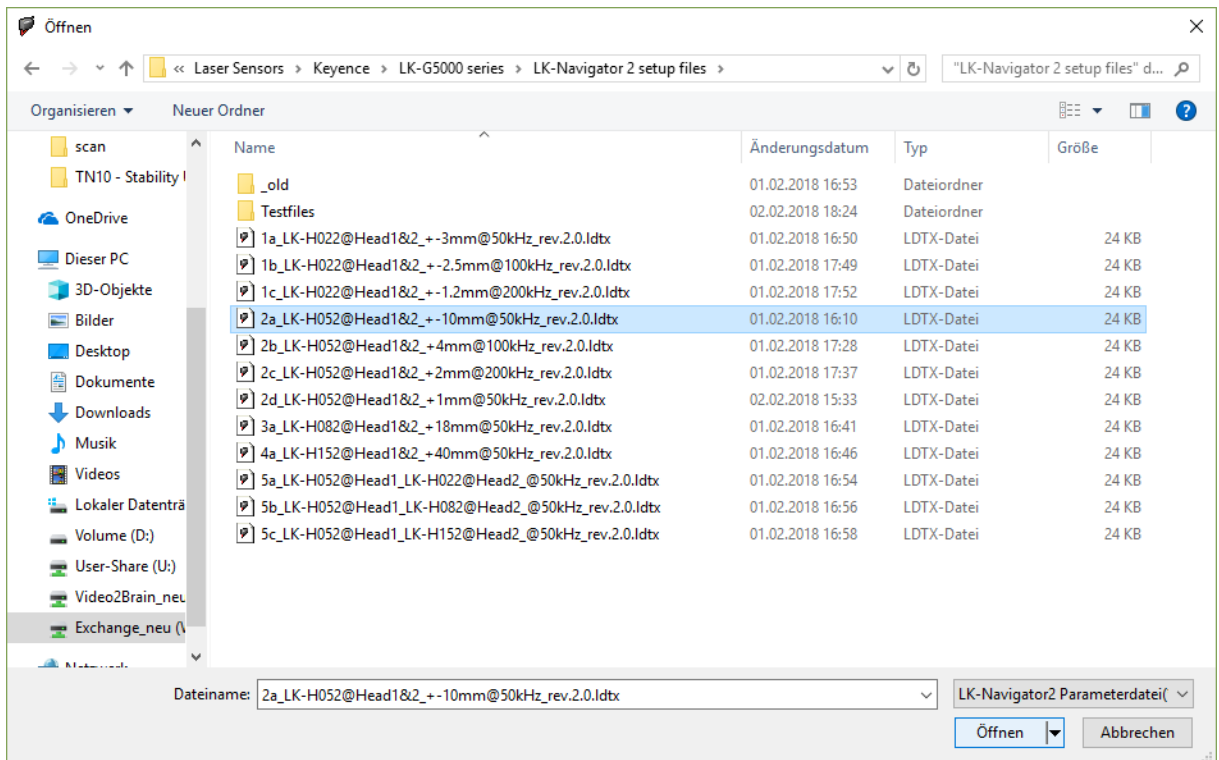
After program start:



Or from menu during program operation:



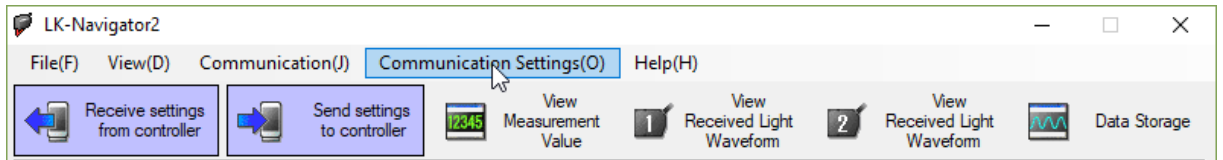
### 1.3 Select Setup file



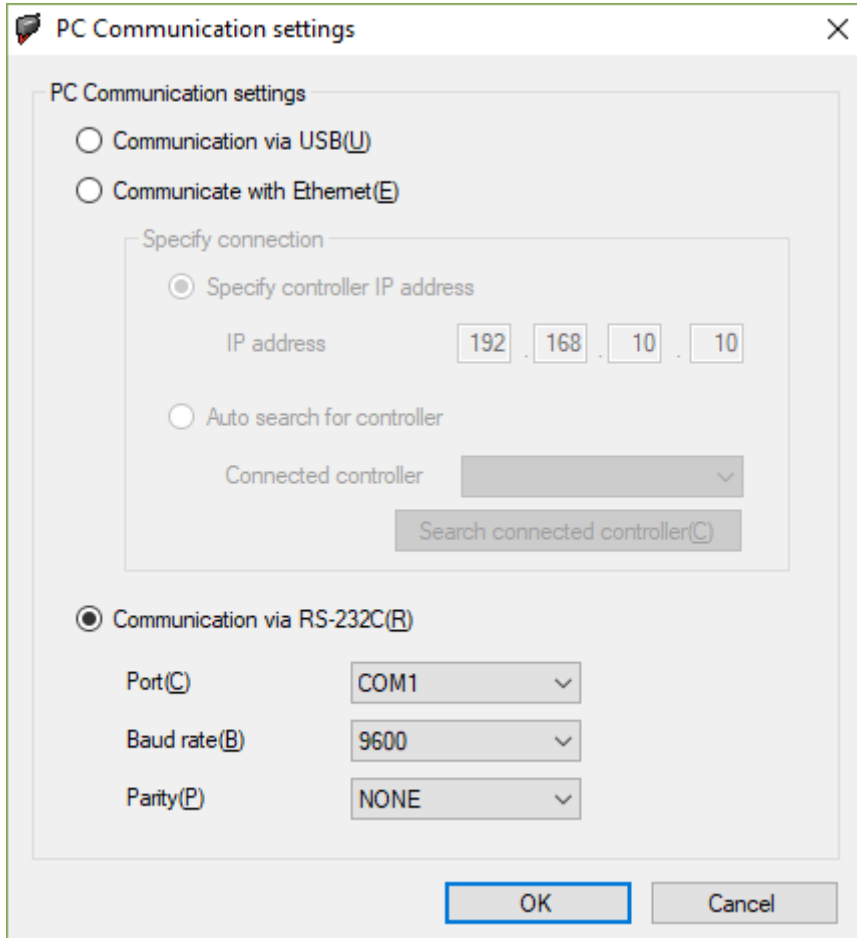
Load from file

## 2 How to connect the LK-Navigator to the Laser Controller

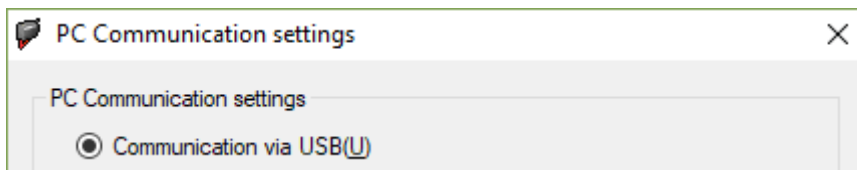
### 2.1 Connection Settings



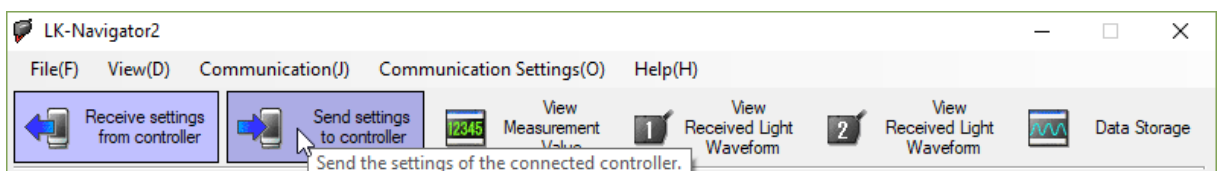
### 2.2 Connection via RS-232



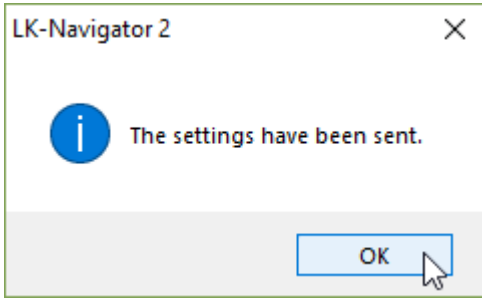
### 2.3 Connection via USB



## 3 How to load a Setup File to the Laser Controller

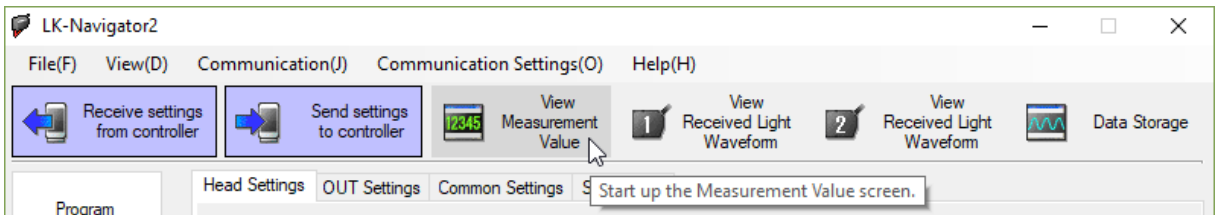


Wait until:

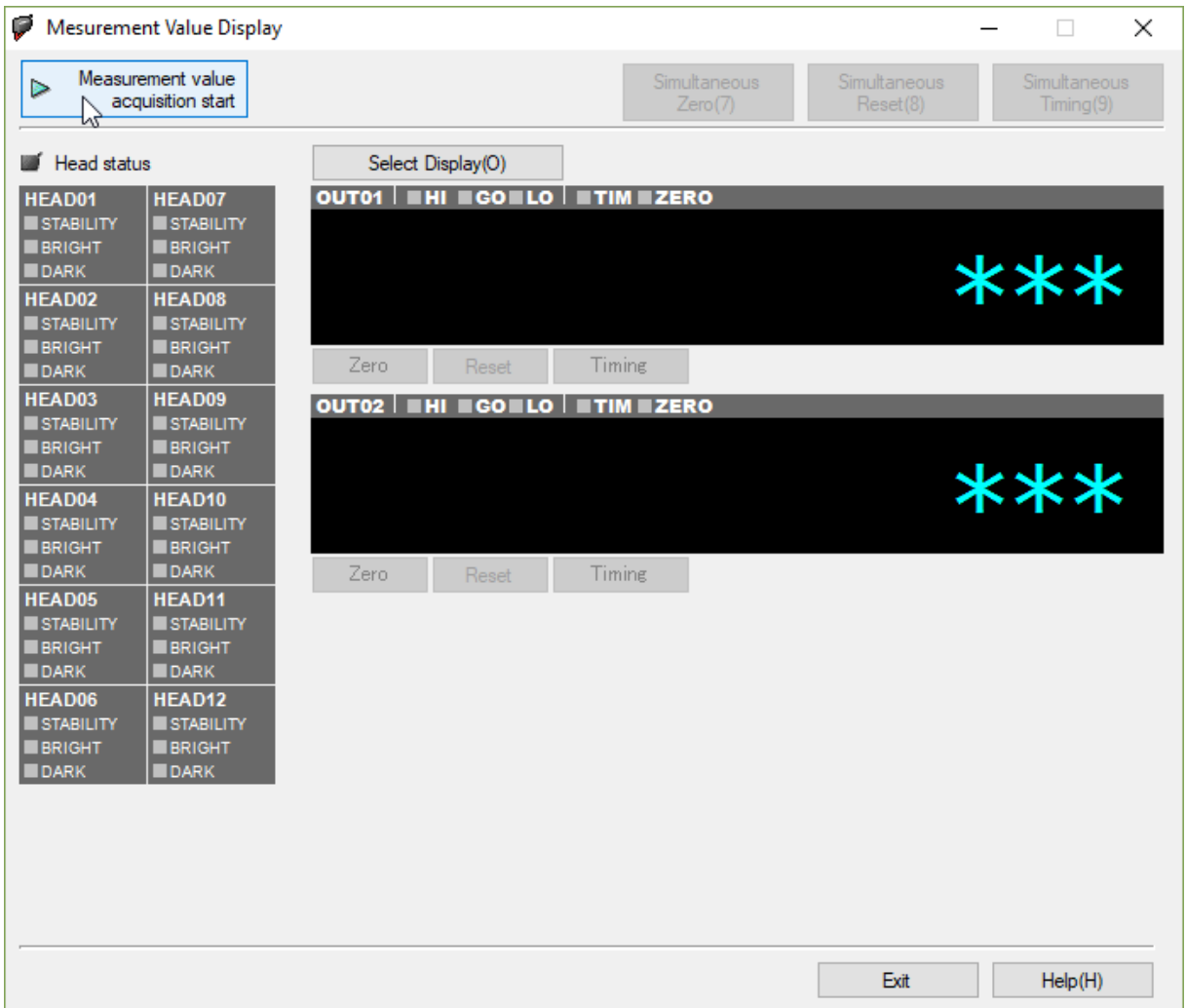


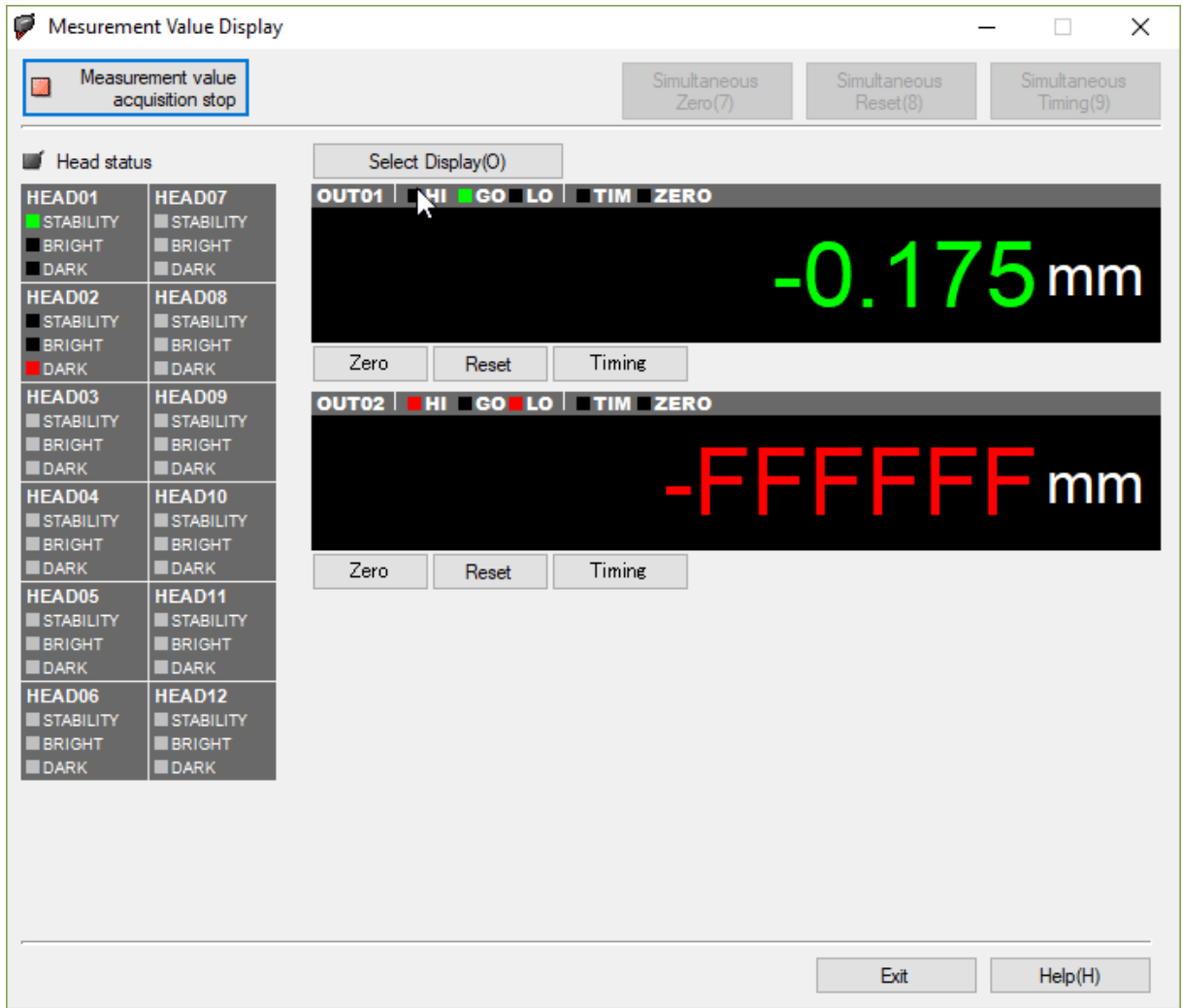
## 4 How to use the Measurement Value Display

### 4.1 Open the Measurement Value Display



### 4.2 Start the Measurement Value Display





## 5 How to change setting

Klippel provides approved and dedicated settings for loudspeaker measurements. It is strongly recommend to keep the Klippel settings. Klippel does not support own settings.

For more information read the Keyence provide LK-Navigator 2 manual.

## 6 References

6.1.1	Manual	Manual Hardware
6.1.2	Specification	<a href="#">A2 Laser Displacement Sensors</a>

All screenshots are taken from the German software version.

Related English screenshots can be found in the included Keyence Manual.



Find explanations for symbols at:

<http://www.klippel.de/know-how/literature.html>

Last updated: 27.3.2018